

LEGO

STAR WARS II

THE ORIGINAL TRILOGY

AVAILABLE NOW!

BUILD AND BATTLE THROUGH THE ORIGINAL TRILOGY!

Play through a fun *Star Wars* galaxy that combines the endless customization of LEGO® with the epic story from *Star Wars* Episodes IV-VI.



BUILD AND RIDE VEHICLES
Build and ride classic *Star Wars* vehicles and get in and out to explore!

MIX AND MATCH CHARACTERS
Create and customize your own playable *Star Wars* characters in millions of different ways.

PLAY WITH A BUDDY
Drop-In/Drop-Out Co-Op lets a friend join in or leave at any time, in any level.

EVERYONE 10+
E
10+
Cartoon Violence, Crude Humor
ESRB CONTENT RATING www.esrb.org



BIONICLE

HEROES



EVERYONE 10+
E
10+
CONTENT RATED BY ESRB

PC
CD-ROM
SOFTWARE



LucasArts and the LucasArts logo are registered trademarks of Lucasfilm Ltd. © 2006 Lucasfilm Entertainment Company Ltd. or Lucasfilm Ltd. and ® or TM as indicated. All rights reserved. LEGO, the LEGO logo and the Minifigure are trademarks of The LEGO Group. © 2006 The LEGO Group. "PlayStation", "PS" Family logo and "PSP" are registered trademarks of Sony Computer Entertainment Inc. Memory Stick Duo(TM) may be required (sold separately). PBIONSUS03

EPILEPSY WARNING

A very small percentage of individuals may experience epileptic seizures when exposed to certain light patterns or flashing lights. Exposure to certain patterns or backgrounds on a television screen or while playing video games may induce an epileptic seizure in these individuals. Certain conditions may induce previously undetected epileptic symptoms even in persons who have no history of prior seizures or epilepsy. If you, or anyone in your family, has an epileptic condition, consult your physician prior to playing. If you experience any of the following while playing a video game — dizziness, altered vision, eye or muscle twitches, loss of awareness, disorientation, any involuntary movement, or convulsions — IMMEDIATELY discontinue use and consult a physician before resuming play.

PRECAUTIONS TO TAKE DURING USE

- This game disc is intended for use exclusively on Windows®-based systems with the minimum configurations specified on the system requirements of the game purchased.
- Do not sit too close to the screen. Sit a good distance away from the monitor, as far away as the length of the cable allows.
- Avoid playing if you are tired or have not had much sleep.
- Make sure that the room in which you are playing is well lit.
- Rest for at least 10 to 15 minutes per hour while playing a video game.

HANDLING YOUR GAME DISC

- Avoid bending the disc. Do not touch, smudge or scratch its surface.
- Do not leave the disc in direct sunlight or near a radiator or other source of heat.
- Take occasional rest breaks during extended play.
- Always store the disc in its protective case.

ESRB RATING

This product has been rated *E10+* by the Entertainment Software Rating Board. For information about the ESRB rating, or to comment about the appropriateness of the rating, please contact the ESRB at www.esrb.org.

Installing the Game 2

Loading the Game 2

Controls 2

Menu Controls 2

In-Game Controls 2

Welcome, Hero! 3

What YOU Have To Do 3

Main Menu 4

Matoran Enclave 4

Zone/Level Select Chamber 5

Levels 5

Shop 6

Character Showcases 6

Defeated Piraka 7

Trophy Cave 7

Game Screen 8

LEGO Counter 8

Health Bar 9

Hero Mode Charge 9

TOA Masks 10

Scanner 10

The TOA 11

Jaller (Red) 11

Hahli (Blue) 11

Kongu (Green) 11

Matoro (White) 11

Hewkii (Brown) 12

Nuparu (Black) 12

TOA Upgrades 12

Combat 13

Enemy Health Bar 13

Auto-Target 13

Switching TOA 13

Pick-ups 14

LEGO Pieces 14

Hearts (Extra Health) 14

Unlockables 14

BIONICLE Collectibles 14

Canisters 14

More Information 15

Piraka 15

Free Play 15

Status Screen 15

Saving and Loading 15

Pausing the Action 15

Credits 16



INSTALLING THE GAME

- Make sure the system requirements and specifications shown on the game pack match those of your machine.
- Place the *BIONICLE Heroes*™ CD into your computer's CD-ROM or DVD-ROM drive. The disk should autorun and take you to the installation screen.

If autorun is disabled on your machine:

- Double-click *My Computer* on your Windows desktop.
- Double-click the CD-ROM drive icon and the installation screen should appear. Otherwise, double-click *Setup.Exe*.
- If the game has not yet been installed, the installation screen will have an Install option available. Click *Install* and the installation process will begin.
- Follow the on-screen instructions.

LOADING THE GAME

Place the *BIONICLE Heroes*™ CD in the CD-ROM or DVD-ROM drive and select *Start/Programs/Eidos /BIONICLE Heroes*.

CONTROLS

MENU CONTROLS

Highlight option	↑/↓ cursor keys
Change setting	←/→ cursor keys
Select	left mouse button or Enter
Go back	Esc

IN-GAME CONTROLS

Move TOA	↑/↓ cursor keys
Strafe (sidestep) left / right	←/→ cursor keys
Free Look	mouse movement
Fire weapon	left mouse button
Switch TOA Mask	mouse wheel
Use TOA Elemental ability	right mouse button
Canister HUD	right Ctrl
Pause Menu	Esc

- You can reconfigure the controls from the Options Menu (see page 4).

WELCOME, HERO!

Imagine the island of Voya Nui. You are on a beach at the foot of a monstrous cliff. A line of meandering footprints leads you to a figure collapsed on the sand. As you approach, a deep rumble of thunder echoes in the distance. Exhausted, a Matoran looks up — at first fearful — but then understanding.

"I know who you are. You are the Hero," he says. You smile. With this encouragement the Matoran tells you the story.

"This land has been invaded by the despicable Piraka. They have stolen the Mask of Life! The Piraka do not know the Mask's real power, but in spite of that they have used it to take control of all the creatures on the island.

"You are the Hero. You must track down and defeat the Piraka, restore the Mask and bring peace back to Voya Nui. Here...."

The Matoran reaches into a large bag lying next to him and pulls out an ornate TOA Inika Mask.

"Collect and use the powers that the TOA Inika Masks will grant you to save Voya Nui. Hero, this is your quest!"

WHAT YOU HAVE TO DO

BIONICLE Heroes™ lets you take on the guise of the heroic TOA Inika and control their unique powers to overcome a host of different enemies. Many dangerous, aggressive BIONICLE creatures, created by the evil power of the Piraka, exist on the island. You must defeat hordes of enemies in each of the six elemental Zones of the island and then defeat the Piraka to win back the Mask of Life and return the island to peace.

Your power (as the Hero) comes from the six different TOA Inika Masks that you can find scattered throughout each level. Once you put on a TOA Mask, you assume the powers and ability of that TOA.

Don't worry — even if the task seems too difficult, you will not be left without help. *BIONICLE Heroes*™ will always prompt you on the best course of action to take: either indicating which TOA to use to make the most of a special ability, or pointing you in the correct direction to get through a level.

MAIN MENU

Once the game loads, you'll see four options:

- **New Game** — Start a new game of *BIONICLE Heroes™*. You'll progress to the Matoran Enclave (see below).
- **Load Game** — Continue a previously saved game. You will be taken back to the Matoran Enclave.
- **Options** — Adjust in-game options, including:
 - **System Options** — Adjust or optimize system settings and reconfigure the game controls, using the following options:
 - **Resolution**
 - **Shader Version**
 - **Texture Quality**
 - **Brightness**
 - **Gamma**
 - **Antialias**
 - **Configure Controls** — Reconfigure the game controls for your specific control: **Mouse & Keyboard** (default), **Gamepad** or **Custom Keys**.
 - **Invert Y Axis**
 - **Mouse Sensitivity**
 - **Effects Volume** — 0 to 10
 - **Music Volume** — 0 to 10
 - **Widescreen** — On/Off
- **Extras** — Check out the following:
 - **Credits**
 - **LEGO® Star Wars™ II: The Original Trilogy Trailer**
- **Quit** — Exit the game.

MATORAN ENCLAVE

You begin your adventure at the Matoran Enclave, a large ceremonial clearing full of ancient structures, chambers, display areas, a useful shop and a nearby beach.

You'll also return here regularly to check on your achievements, upgrade your TOA and review what you've collected and unlocked in these adventures.

- Select **New Game** from the Main Menu to enter the Matoran Enclave.

ZONE/LEVEL SELECT CHAMBER

Directly ahead of you and down a long staircase is the Zone/Level Select Chamber. This has six doorways that conceal passages to the portals that will take you to each part of the six elemental Zones on Voya Nui.

To return to the Matoran Enclave from the Zone/Level Select Chamber, face the stairway and move up the stairs.

The island of Voya Nui is divided into six distinct Zones:

- **Hakann's Volcano** — Based in and around the island's volcanic zone, where you can explore caves, caverns and volcanic plains.
- **Reidak's Desert** — Set in Voya Nui's desert region, with the action also based in and around the Island citadel.
- **Thok's Mountain** — Features a landscape of rocky outcrops, cliffs, and icy mountain passes.
- **Vezok's Coastline** — Set in and around the shoreline of Voya Nui.
- **Zaktan's Jungle** — A tropical jungle bristling with dense jungle, hidden temples, waterfalls and treetop villages.
- **Avak's Stronghold** — Set in and around the ominous Piraka Stronghold.

TO BEGIN A NEW GAME:

1. Enter the Zone/Level Select Chamber. The entrance to Vezok's Coastline will open.
2. Enter this area, where you will find the four portals to the levels of Vezok's Coastline. Only Piraka Bluff is initially selectable.
3. Select the unlocked level and press the **left mouse button**.

LEVELS

A short introduction leads you into each level and gives you an idea of whom (or what) you might encounter. Complete the three levels within a Zone to enter the Boss level, where you battle the Piraka who controls that Zone.

Initially, only one Zone is available, but as you progress, other Zones open up. Levels must be completed in sequence within a Zone, but you can play any completed level in Free Play mode (see page 15).

SHOP

The Shop is opposite the entrance to the Zone Select chamber in the Matoran Enclave central square. Here the Matoran who gave you the TOA Mask is waiting, ready to sell you a number of useful items. TOA upgrades, goodies, hints for completing the game and finding special bonus areas can all be bought here with LEGO pieces collected in the game.

SHOPPING IS EASY:

- Walk up to the Matoran to browse in the Shop to see what he has to offer.
- Use the **cursor keys** to select an item.
- Press **left mouse button** to buy the selected item.
- Press Esc to leave the Shop

CONSTRUCTED ITEMS:

- An assembled LEGO piece (structure or object) is known as a *construction*.

Some items bought in the Shop can be *constructed*. These items appear in various places in Piraka Beach.

CHARACTER SHOWCASES

Character Showcases are chambers leading off from the curved ramp running up and over the Zone Select Chamber entrance. As you proceed through a level, you will find two types of special canisters to pick up. One type of canister unlocks creatures that can then be viewed in the Character Showcase.

- Three Showcase Chambers are available to admire: the unlocked Bohrok, Visorak and Vahki.
- The fourth Showcase Chamber (on the right) lets you look at the game's sub-Bosses. When you defeat a sub-Boss (in levels 1 and 3 of any Zone), that character appears within a containment chamber in this room, accompanied by full stats and key information.



DEFEATED PIRAKA

When you defeat a Piraka at the end of a Zone, that Piraka is unlocked and becomes available to you as a playable character.

TROPHY CAVE

The Trophy Cave is to the right of your starting position on the Matoran Enclave. Go down the stairs and you will arrive at a chamber with three large screens. Here, your control of TOA movements is limited to the **cursor keys** ◀/▶.

To return to the Matoran Enclave from the Trophy Cave, press Esc. The TOA will move a few steps out of the chamber, and then you will be able to use the normal TOA movement controls.

UNLOCKED BIONICLE COLLECTIBLES:

On the left-side screen of the Trophy Cave, you can view all the special BIONICLE collectibles you've unlocked in the game so far. You unlock these collectibles by picking up special canisters in the levels. There are 100 collectibles you can acquire. Once collected, they appear on this grid.

- Use the **cursor keys** to select a collectible.
- Press the **left mouse button** to look at its details and history.

UNLOCKED CREATURES:

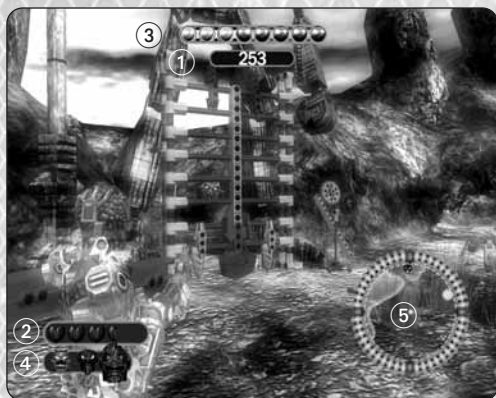
On the middle screen in the Trophy Cave, you can look at a 36-panel grid showing creatures you've unlocked during the game, and full details of their powers.

- Use the **cursor keys** to select a creature.
- Press the **left mouse button** to look at its details and history.

ACHIEVEMENT WALL:

On the right-side screen of the Trophy Cave you can see the Achievement Wall. This shows all your successes during the game. Medals are issued here to the "best of the best" and BIONICLE Heroes™ high achievers.

GAME SCREEN



Once you enter a level, you'll see the game screen. Though generally clear and uncluttered, the game screen does show some very important information:

- ① LEGO Counter
- ② Health Bar
- ③ Hero Mode Charge
- ④ TOA Masks
- ⑤ Scanner (Enemy Icons, Mask Icons and Progression Direction appear in the Scanner)

LEGO COUNTER

This shows the number of LEGO pieces you've collected. Plugs, cogs and bricks can be found loose, in clusters, or within constructions (that you need to destroy in order to release the pieces). LEGO pieces also appear when you defeat enemies, perform constructions, or activate LEGO constructions.

Pick up LEGO pieces by walking over them. The pieces fly up to the top of the screen and are added to your total. Use LEGO pieces to buy upgrades for the TOA and charge up the Hero Mode gauge.

You can find three types of LEGO pieces:

- *Silver* — Most common, adds 10 to the counter.
- *Gold* — Adds 50 to the counter.
- *Blue* — Very rare, adds 250 to the counter.

HEALTH BAR

Heart icons in the Health Bar show how much health the active TOA has. You gain Hearts as pick-ups after destroying certain enemies, but you lose Hearts as you take hits in combat. Once you lose all the Heart icons in this panel, you lose that specific TOA Mask and automatically switch to the next available TOA Mask. When you lose a TOA Mask, you also lose some of the LEGO pieces you collected. Heart icons flash when they are damaged.

- If no other TOA Mask is available, you return to your last checkpoint. (When you pass a checkpoint in any level, you will see the word "Checkpoint" on-screen.)

HERO MODE CHARGE

Collecting a sufficient number of LEGO pieces lets you activate Hero Mode and allows the transformation of the TOA into the Golden TOA. This bar shows the Hero Charge building up and gives you an idea of how much farther you have to go before you can kick off Hero Mode. Once this bar is full, the transformation into the Golden TOA is instant.

When you are in Hero Mode, Heart icons are shown in gold. Triggering Hero Mode creates a small shockwave around the TOA's feet, destroying any enemies within a small radius.

GOLDEN CONSTRUCTIONS

A number of gold LEGO pieces can only be built (or constructed) by the Golden TOA. These flash the Hero Mode icon when you approach them if you don't have enough LEGO pieces to enter Hero Mode and activate them.

- In Hero Mode, press the **right mouse button**, when prompted, to perform a Golden Construction.
- Triggering a Golden Construction causes a golden shockwave to emit from the construction, which damages any enemies within range. All other AI creatures (non-bosses) will become frozen for the duration of the Golden Construction.
- Triggering a Golden Construction uses up the TOA's Hero Mode Charge.

INVULNERABILITY

The Golden TOA cannot be affected by attacks from any enemies in the level.

INCREASED DAMAGE

The Golden TOA has the weapons of the TOA Mask he has collected, but the damage he does is considerably more extensive.

When the Hero Mode Charge runs out, the TOA returns to normal and the Hero Mode bar must be recharged from the beginning. However, you will not lose your collection of LEGO pieces; you keep these and can use them later in the Shop.

TOA MASKS

The power of the six TOA Inika comes from the Masks you will find throughout the levels. The ones you pick up are shown in this panel. The Mask pulsating on the right is the currently active TOA.

- Use the **mouse wheel** to cycle through the Masks.

Once you have a Mask and put it on, you adopt the powers and abilities of that TOA. You lose that Mask (and all its associated powers) if you lose all its Heart icons in combat. The Mask is not lost for good; you'll be able to pick it up somewhere else in the level (look for it on the Scanner).

SCANNER

The Scanner display gives you very important in-game information. You are located at the center of the rotating scanner. From here you can view the relative positions of:

- *Enemies* (red dots)
- *TOA Mask Locations* (colored Mask icons)
- *Gold Constriction Locations* (gold circles)
- *Progress Direction* (arrow)
- *TOA's line of vision* (white cone)

Each TOA customizes the Scanner screen with its own colors. The active Mask on the right of the panel pulses to remind you of your current TOA character.



THE TOA

JALLER (RED) TOA INIKA OF FIRE

One of the fastest TOA over any ground, JALLER carries a powerful rapid-fire style weapon. He can cross lava flows at locations where prompted. JALLER is a good choice if you have to get somewhere fast!

- With his upgraded Torch Ability, JALLER can burn his way through LEGO vines.



HAHLI (BLUE) TOA INIKA OF WATER

HAHLI is the only TOA that can go into or across water (streams, rivers, or underwater passages). Well-armored and carrying a short-range beam weapon, she has medium speed on land but is faster in water.

- With her upgraded Trench Ability, Hahli can operate water-based constrictions.



KONGU (GREEN) TOA INIKA OF AIR

KONGU can jump and perform spectacular leaps at specific locations (by pressing the **right mouse button**). KONGU travels quickly through the air, and has good all-round armor and strength. He wields a short-range blaster that can be slow to reload.

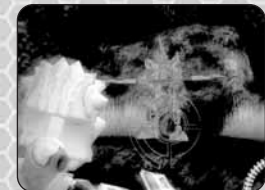
- With his upgraded Gust Ability, KONGU can create gusts of wind to activate wind-based constrictions.



MATORO (WHITE) TOA INIKA OF ICE

MATORO is the distance specialist. With his special ability he can pick off troublesome enemies at long range. Zoom in on enemies by pressing the **right mouse button**. MATORO is very slow moving across the ground and is one of the weakest of the TOA. He carries a powerful ice weapon that can be slow to reload.

- With his upgraded Freeze Ability, MATORO can create ice paths from water.



HEWKII (BROWN) TOA INIKA OF EARTH

HEWKII is a very practical TOA who can manipulate constructions, and either assemble or break up LEGO pieces. If some type of machinery needs to be used, than HEWKII is the TOA for the job. If a LEGO structure needs to be dismantled for its LEGO pieces, that's the task of this TOA.

HEWKII can build bridges to span chasms and assemble boats and vehicles that can be used temporarily. He is one of the slowest of the six TOA across land but is well-armored and wields a very powerful stone smasher.

- With his upgraded Fragment Ability, HEWKII can fragment walls to uncover hidden treasures.



NUPARU (BLACK) TOA INIKA OF STONE

NUPARU is the only TOA that can climb rock faces. Approach a suitable cliff (showing a climb surface) and, when prompted, press the right mouse button. NUPARU can walk up the rock face using the same movement controls as on the flat.

NUPARU has a slower movement speed but is the strongest of the six TOA. He can conjure balls of pure energy that are useful for lobbing over protective ledges (though this is not the best choice for close combat).

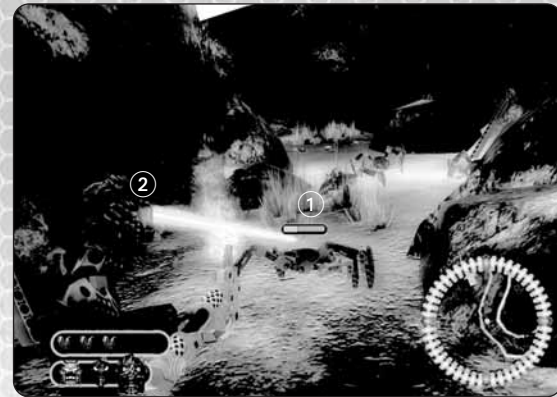
- With his upgraded Excavate Ability, NUPARU can dig out hidden treasures.



TOA UPGRADES

Upgrade the TOA at the Matoran Enclave shop. You can buy enhanced TOA armor, upgrade to more powerful weapons with a better fire/reload rate and upgrade a TOA's special ability (very expensive).

COMBAT



① Enemy Health Bar

② Auto-Target

ENEMY HEALTH BAR

All enemies and objects fired upon by the TOA display a Health Bar to instantly show how much damage you are dishing out. Sometimes, if your weapon has a broad spread, several Health Bars will appear at the same time. Once you inflict maximum damage, the enemy target explodes into its LEGO pieces for you to claim!

AUTO-TARGET

Your TOA will auto-target any creatures or objects you are facing. When the target is in range, a green aiming beam emanates from the eyes of the Mask and locks-on to the nearest target, object or enemy within the TOA's cone of vision. To change a target object, move your view and another target will be acquired.

SWITCHING TOA

It's very important to use the right tools for the right job. It's especially true in combat: always select the most effective TOA for the task ahead. Do you want speed? Strength? If a specific task requires a specific TOA's special ability, then you will be prompted with an icon of that TOA's Mask.

- Use the mouse wheel to switch TOA and you will see the right mouse button icon used to carry out that special ability.
- Press the right mouse button to carry out the special ability.

PICK-UPS

LEGO PIECES

LEGO pieces are plugs, cogs, bricks, etc. found loose, in clusters, or in LEGO constructions (which you need to destroy in order to release the LEGO pieces). Once the pieces are on the ground, walk through or over them to add them to your total.



- **Caution!** If you wait too long to pick them up, the pieces will disappear. You can also shoot some objects or enemies from a distance and the pieces will be credited on your LEGO counter.

Look everywhere for objects, creatures, LEGO constructions, chests — anything that might help add to your LEGO counter. In some sections of a level, you might need to charge up Hero Charge Mode twice in a row in order to progress. In this case, always make sure you have some LEGO pieces in reserve that you can blast to add to your counter (and Hero Charge Mode charge).

- **Remember!** LEGO pieces are very important for charging up Hero Charge Mode!

HEARTS (EXTRA HEALTH)

You can pick up Heart icons after destroying certain enemies in combat. You lose Hearts as you take hits in combat.



UNLOCKABLES

BIONICLE COLLECTIBLES

There are 100 different objects to unlock throughout all the Zones. These are found in Gold Canisters.

All collectibles that you've unlocked are listed at the end of a level on the Status Screen and appear in the Trophy Cave with full details and information.



CANISTERS

Each level contains a limited number of BIONICLE canisters. Two types are available:

- **Silver** — Unlockable from most levels. Unlocking five in a level unlocks enemy creatures to feature in the Trophy Cave.
- **Gold** — Unlockable from all levels. Unlocks Masks that will appear in the Trophy Cave.



MORE INFORMATION

PIRAKA

By defeating a Piraka, you will make it a seventh playable character that can be used in Free Play within its respective level.

FREE PLAY

Once you complete any level in *BIONICLE Heroes™*, you can replay it to discover new surprises, rewards and bonuses. Only by increasing your TOA abilities, unlocking hidden characters, exploring and experimenting can you become a true BIONICLE Hero.

In Free Play, you can add to your total LEGO pieces, and any newly discovered hidden areas will be especially rewarding.

To play a level in Free Play, select it from the Zone/Level Select Chamber in the Matoran Enclave.

STATUS SCREEN

After completing a level, you will see the Status Screen, which shows full details of what you have achieved:

- Number of bonus items collected.
- Number of LEGO pieces held.
- Achievements unlocked.

Press the **left mouse button** to return to the Zone/Level Select Chamber.

SAVING AND LOADING

When you select *New Game* from the Main Menu, and at any auto-save point during the game, you will be asked to select a Save Game slot. *BIONICLE Heroes™* will then auto-save your progress after each level, and each time you leave the Shop after making a purchase.

Your progress within levels is also stored whenever *Checkpoint* appears on-screen. However, if you quit out of a level before reaching an auto-save point, your progress through it will be lost.

To load a saved game, select *Load Game* from the Main Menu and then select a save game file.

PAUSING THE ACTION

Press **Esc** to pause gameplay and open the Pause Menu with these options:

- **Game Progress** — Check on your progress through the game. (Available in the Matoran Enclave and Zone/Level Select Chamber only.)
- **Resume** — Return to gameplay.
- **Options** — Adjust in-game options (*see page 4*).
- **Quit** — Exit the game and return to the Main Menu.
- **Quit to Windows** — Exit the game and return to the desktop.

CREDITS

TRAVELER'S TALES

Director
Jon Burton

Head of Production
Paul Flanagan

Assistant Producer
Kieran Gaynor

Lead Designer
Arthur Parsons

Lead Programmer
Chris Stanforth

Lead Artist
Michael Snowdon

Background Art Direction
David Hoye

Lead Animator
Ed Cates

Head of Technology
Dave Dootson

Lead Engine Programmer
Alistair Crowe

Design
Jon Burton
Arthur Parsons

Game Programming
Pete Akrill
Adam Clixby
Chris Payne
Gareth Richards
Richard Taylor
Duncan Walker

Level Artwork
Rob Dickerson
Paul Dobson
Ian Hall
Dave Hoye
Andy Ingram
Dimitris Krokidis
Charles McNair
Mike Snowdon
Barry Thompson

Character Artist
Guy Avery

2D Artwork
Duncan Philpotts

Effects Artist
Kennedy Wood

Animation
Ed Cates
Mark Crane
Matthew Maggs
Paul Munro

Audio Engineer
David Whittaker

Engine & Tools Programming
Kay Chang
David Connell
Alistair Crowe
Ralph Ferneyhough
Chris Halliday
Roland Houghs
Paul Hunter
Steve Monks
Alan Murta
Richard Taylor

Additional Animation
Annika Barkhouse
David Brown
James Dawson
Colm Duggan
Phil Gray
Simon James
Duncan Kinnaird
Ross Norcross

Quality Assurance
Jonathan Mayer

Office Manager
Bev Deakin

Special Thanks
BzPower Reference
Binkmeister
Black Six
Screenguy
Bonesiii
QB
Bohrokwill
Toa Tilius
Pekel
Toa Pilak Evolved
Sam, Ben and Helen Burton
Nic and Lily, Ruth Baines
Fiona, Emily and Peaches Stanforth
Chrissy and Lauren Edwards
Adrienne Payne, Trudy Ingham
Maria Lines, Elizabeth Holl
Emma and Oliver Taylor, Karen Philpotts
Marilena Aspioti, Dan McCreadie
Mum and Shay, Sara Gray, Mark Pitcher
Sonia Chabouni and mum for cakes
Stacey Arnold, Jake MossWood
Rusty and Lauren,
Andrew and Jordan Dawson
and Josh Shrouder,
Adam Sweeney & Rob Cox for their help
on work experience

TT GAMES PUBLISHING

Managing Director
Tom Stone

Development Director
Jonathan Smith

Producer
Nick Ricks

Marketing
Richard Earl

Business Development
Garry Edwards

Financial Controller
Mike Wyre

Sound Effects
Paul Weir, Earcom, www.earom.net

Music Composed by
Ian Livingstone, Courtesy
of Tsunami Sounds Ltd., www.tsunami.co.uk

Additional Testing
Toby Smith
Sam Smith

Intro Movie
Think Tank Studios,
www.thinktankstudios.co.uk

LEGO COMPANY

Michael Boland
Lena Dixen Højland
Bo Leervad Christensen

EIDOS U.K.

Producer
Luke Valentine

Development Director
Darren Barnett

Development Manager
Lee Singleton

Creative Development Director
Patrick O'Luanigh

Brand Manager
Alex Price

Head of Global Brand
Larry Sparks

Brands Controller
Fabien Rossini

Head of Support Services
Flavia Timiani

Support Services Coordinator
Julie Payne

QA Manager
Marc Titheridge

QA Supervisor
Ian Rowsell

QA Lead Technicians
Germaine Mendes
Tyrone O'Neill
Anthony Wicker

QA Technicians
Jason Claridge
Richard Edbury
George Wright
David Haddon
Richard Acherki
Andrew Standen
Shams Wahid
Steve Inman
Matthew Poon

Localisation QA Supervisor
Arnaud Messager

Lead Localisation QA Technician
Laure Diet

Localisation QA Technicians
Arianna Pizzi
Augusto D'Apuzzo
Francisca Barceló Ávila
Pablo Trenado
Tobias Horch
Pedro Geppert
Edwige Béchet

Senior Localisation Manager
Monica Dalla Valle

Localisation Manager
Jan Buchner

Mastering Supervisor
Jason Walker

Mastering Engineer
Ray Mullen

Creative Manager
Quinton Luck

Senior Designer
Jodie Brock

Designer
Gary Blake

Manual
Alkis Alkiviades

EIDOS U.S. PUBLISHING

CEO & President,
Eidos North America
Bill Gardner

Executive Vice President
of Sales & Marketing
Robert Lindsey

Vice President
of Legal and Business Affairs
James O'Riordan

Vice President of Finance
Malcolm Dunne

Director of Marketing
Matt Gorman

Marketing Manager
Jefferson Dong

Director of Public Relations
Michelle Seebach Curran

Public Relations Manager
Tali Fischer

Community Specialist
Tony Perata

National Sales Manager
Joe Morici

Channel Marketing Manager
Janty Sumimoto

Channel Marketing
Project Manager
Diane Eng

Channel Marketing Coordinator
Rafal Dudzic

Web Producer
Roderick van Gelder

Web Designer
John Lerma

Media Manager
Micheal Tran

Creative Director
Karl Stewart

Creative Services Project Manager
Eileen Buenviaje

Graphic Designer
James Song

Operations Manager
Gregory Wu

Senior External Producer
Nick Goldsworthy

Associate Project Manager
Clayton Palma

Product Specialists
Jeff Lowe
Stephen Cavoretto
Aaron Safronoff
Katie Bieringer

Publishing Coordinator
Clint Waasted

Senior Business Development Manager
Tom Marx

QA Mastering/Hardware
Jordan Romaidis
Patrick Goodspeed

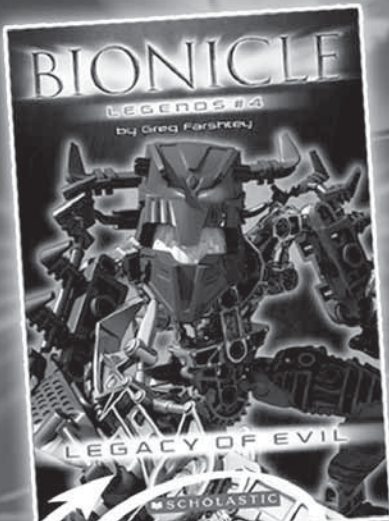
Customer Support Supervisor
Sean McCloskey

Customer Support Representatives
Richard Campbell, Francesca Zulueta

Special Thanks
Danny Jiang
Hanshaw Ink & Image

LIVE THE LEGEND!

Check out these new BIONICLE tales!



Includes two mini-figures!

The Piraka are the embodiment of evil, but how did they meet, and how did they learn about the Mask of Life?

The Toa are on the hunt for the Mask of Life. But to find it, they must defeat a monster born from an ancient curse!

 SCHOLASTIC

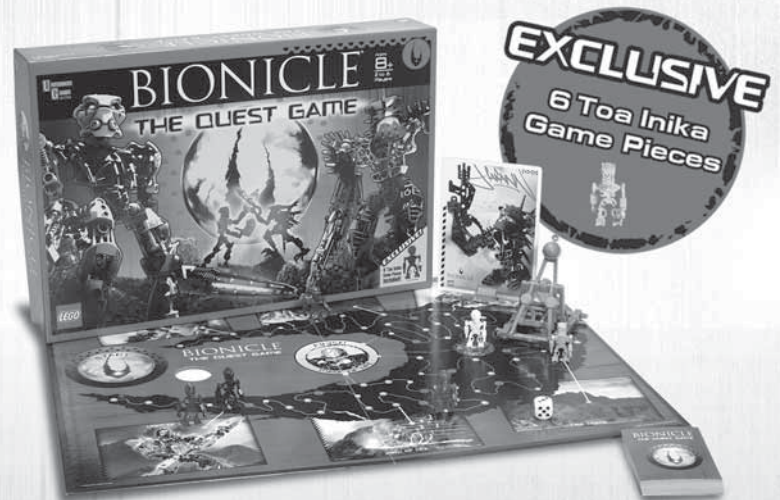
www.scholastic.com

Available wherever books are sold.



SCHOLASTIC and associated logos are trademarks and/or registered trademarks of Scholastic Inc. LEGO, the LEGO logo, BIONICLE®, and the BIONICLE® logo are trademarks of the LEGO Group. Copyright 2006 The LEGO Group.

BIONICLE®



**PLAY THE QUEST GAME
FIND THE MASK AND SAVE VOYA NUI**

The island of Voya Nui is under attack. The evil Piraka have enslaved the island's Matoran villagers with their virus balls and are now on the hunt for the powerful Mask of Life hidden within the island's core. If they find it, the BIONICLE® universe will be destroyed.

Test your courage - play BIONICLE: The Quest Game. Take on the Piraka with your protodermis balls, find the Mask and lead the Toa Inika to victory.

Buy your copy today at retailers near you or at





© 2006 The LEGO Group. LEGO, the LEGO logo and BIONICLE are trademarks of the LEGO Group. © 2006 University Games Corp., San Francisco, CA 94110. Produced by University Games Corporation under license from the LEGO Group.



TECH SUPPORT

CONTACTING TECH SUPPORT

If you have a technical problem with the game, our Support Department is here to help. Our web site contains up-to-date information on the most common difficulties with our products; this information is the same as that used by our support agents. If you are unable to find the information you need on our web site, please feel free to contact us via email, fax, telephone or letter. (When contacting us via email or fax, please be sure to put the game title in the subject of your message.)

ASSISTANCE VIA THE WORLD WIDE WEB

The fastest way to answer most questions is by visiting our online support. You can find the latest support information at <http://support.eidosinteractive.com/>. Our support FAQ's are available 24/7 for your convenience. These pages are updated frequently and have the same information that our support techs will use to answer your question if you call or email us. The answers to about 90% of the questions we are asked can be found there, so it really is worth the time to take a look!

The second fastest way to get an answer to your question is to email us. (You will find our email submission forms at our web site.) We typically respond to email queries within 24-48 hours during the business week. Response times can be considerably longer over the weekend, holidays and immediately after a product release. It all depends on how many people we have working and how much email is coming in at any one time, but we do try really hard to get you the right answer as quickly as possible. Weekdays, excluding holidays, during the hours when the phones are open, we still give email questions our highest priority.

Through this site you will also have access to our FTP (File Transfer Protocol) area where you can download patches and new enhancements as soon as they become available.

ASSISTANCE VIA TELEPHONE OR FAX

We are available to take your calls Monday through Friday, 9:00 a.m. – 12 noon and 1 p.m. – 5:00 p.m., Pacific Time at (415) 615-6220 (voice) or (415) 547-1201 (fax). Our tech support department is closed on all major holidays.

Note: You are responsible for all toll charges when calling.

To ensure the quickest service you will need to be at your computer and have the following information at hand:

- A complete listing of your computer's hardware. (Contact your computer manufacturer if you are unsure.)
- What version of Windows® you are using.
- A copy of your DirectX Diagnostics report.
 1. Click *Start*.
 2. Click *Run*.
 3. Type *dxdiag*.
 4. Click *OK*.
 5. Click the *Save Information* button and save the file to your computer.
 6. When you call our Technical Support line, either have this file open or have a printed copy. If you send an email query you may attach the file to the email.
- What error message(s), if any, you have had.
- How the game is currently configured.

Register online at
www.eidosregistration.com

EIDOS, INC., LICENSE & LIMITED WARRANTY

Eidos, Inc., warrants to you, the original purchaser of this Game Disc, that for a period of ninety (90) days from the date of your purchase, this Game Disc shall be free from defects in materials and workmanship. If, at any time during the applicable ninety (90) day warranty period you determine that this limited warranty has been breached, Eidos, Inc., agrees, in its sole option, to repair or replace, free of charge, any such Game Disc, provided the Game Disc is returned postage-paid to the Eidos, Inc. Factory Service Center and a proof of date of purchase is included. This limited warranty is not applicable to normal wear and tear and shall be void with respect to any defects that arise from Game Disc abuse, unreasonable use, mistreatment or neglect. This Game Disc is sold "as is" without any warranties of any kind, express or implied, including implied warranties of merchantability or fitness for a particular purpose, other than the limited warranty expressly stated above.

No other claims arising out of your purchase and use of this Game Disc shall be binding on or obligate Eidos, Inc., in any manner. Eidos, Inc., will not be liable to you for any losses or damages incurred for any reason as a result of your use of this Game Disc, including, but not limited to, any special, incidental, or consequential damages resulting from your possession, use or malfunction of this Game Disc.

This limited warranty states the entire obligation of Eidos, Inc., with respect to the purchase of your Game Disc. If any part of this limited warranty is determined to be void or illegal, the remainder shall remain in full force and effect.

For warranty support please contact our Customer Support department at (415) 615-6220. Our staff is available Monday through Friday, 9:00 a.m. to 12:00 noon and 1:00 p.m. to 5:00 p.m. Pacific Time. You are responsible for all toll charges. **Customer Support Representatives will not provide game hints, strategies or codes.**

PRODUCT RETURN PROCEDURE

In the event our support agents determine that your game Game Disc is defective, you will need to forward material directly to us. Please include a brief letter explaining what is enclosed and why you are sending it to us. The agent you speak with will give you an authorization number that must be included and you will need to include a daytime phone number so that we can contact you if necessary. Any materials not containing this authorization number will be returned to you unprocessed and unopened.

Send your postage-paid package to the following address:

Eidos, Inc. Customer Services
RMA# (state your authorization number here)
651 Brannan Street, Suite 400
San Francisco, CA 94107

You are responsible for postage of your game to our service center.

BIONICLE® game software © TT Games Publishing Ltd 2006. Developed by Traveller's Tales Ltd. Published by Eidos, Inc. and TT Games under license from the LEGO Group. LEGO, the LEGO logo and BIONICLE® are trademarks of the LEGO Group. ©2006 The LEGO Group. Eidos and the Eidos logo are trademarks of Eidos Interactive Ltd. All rights reserved. Software platform logo (™ and ©) IEMA 2006. The rating icon is a registered trademark of the Entertainment Software Association.