

THE  
OFFICIAL  
**TOMB RAIDER**  
STORE is here ▼

**TOMBRAIDER.COM/STORE**

GEAR UP TODAY.  
**LOG ON FOR EXCLUSIVE**  
APPAREL - ART - COLLECTIBLES - ETC

# TOMB RAIDER



**TAKE YOUR GAME FURTHER  
WITH OFFICIAL PRODUCTS  
FROM BRADYGAMES!**

## Signature Series Strategy Guide

Complete coverage of the game from start to finish, including Challenge Tombs and Multiplayer! Includes an exclusive DLC multiplayer character, the Scavenger Scout!

## Limited Edition Strategy Guide

Deluxe hardcover guide with all the great content of the Signature Series and more! Includes two exclusive DLC multiplayer characters, the Scavenger Scout and Scavenger Executioner!



## A Survivor is Born: The Art of Tomb Raider

With stunning visuals and in-depth commentary, this high-quality art book explores the compelling world of *Tomb Raider*.

## iBook Digital Format

The perfect digital companion to *Tomb Raider*. Get all the content of the print guide in the interactive iBooks 2 format. Includes imbedded videos, clickable screenshots and more!



## Interactive Map App

This fully interactive map app gives you everything you need to reveal all of the game's multiple collectibles and challenges!



CRYSTAL  
DYNAMICS

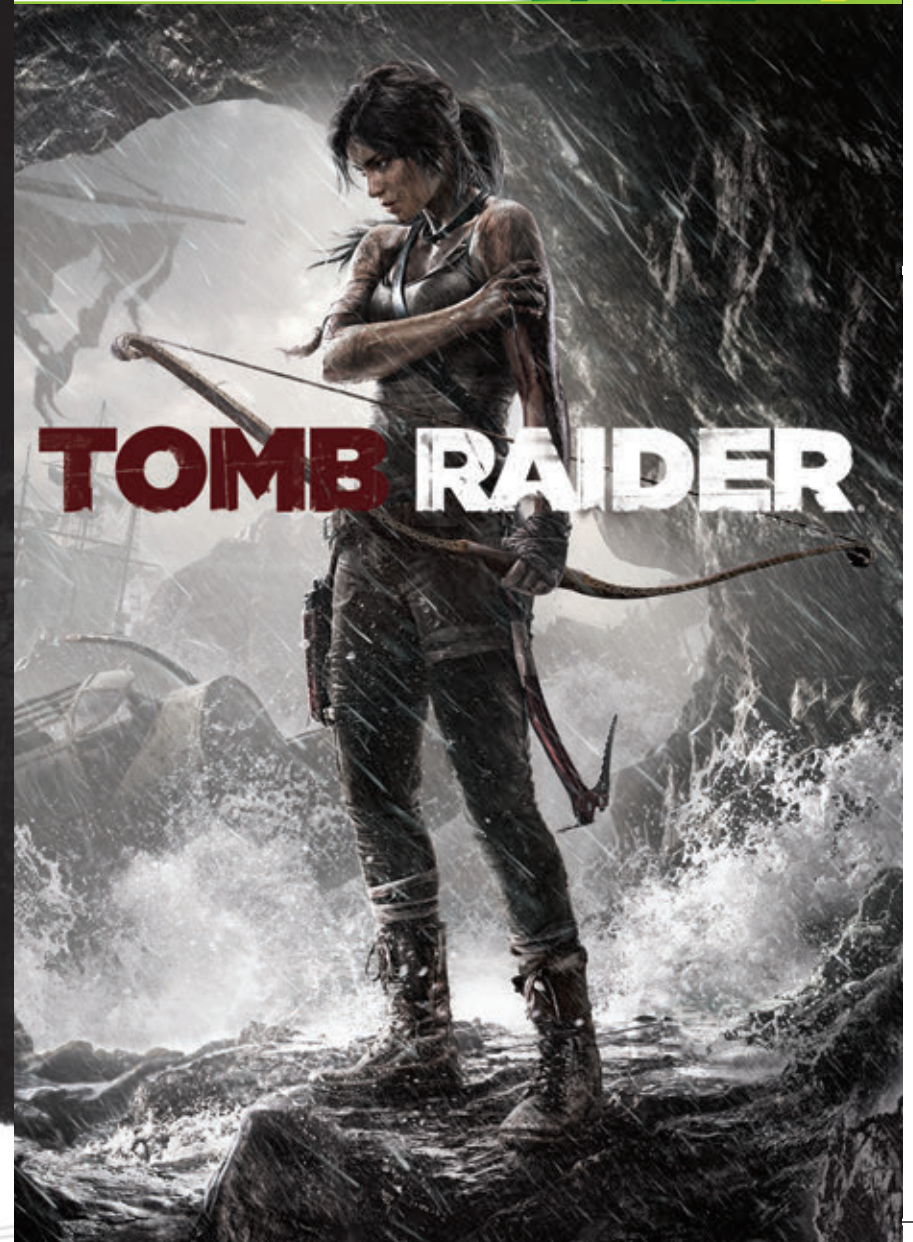
SQUARE ENIX.

Available on the  
iBookstore



Tomb Raider © Square Enix Ltd. 2013. Square Enix and the Square Enix logo are registered trademarks of Square Enix Holdings Co., Ltd. Lara Croft, Tomb Raider, Crystal Dynamics, and the Crystal Dynamics logo are trademarks of Square Enix Ltd. All other trademarks are the property of their respective owners. All rights reserved.

XBOX 360



**⚠ WARNING** Before playing this game, read the Xbox 360® console, Xbox 360 Kinect® Sensor, and accessory manuals for important safety and health information.[www.xbox.com/support](http://www.xbox.com/support).

**Important Health Warning: Photosensitive Seizures**

A very small percentage of people may experience a seizure when exposed to certain visual images, including flashing lights or patterns that may appear in video games. Even people with no history of seizures or epilepsy may have an undiagnosed condition that can cause “photosensitive epileptic seizures” while watching video games. Symptoms can include light-headedness, altered vision, eye or face twitching, jerking or shaking of arms or legs, disorientation, confusion, momentary loss of awareness, and loss of consciousness or convulsions that can lead to injury from falling down or striking nearby objects. **Immediately stop playing and consult a doctor if you experience any of these symptoms.** Parents, watch for or ask children about these symptoms— children and teenagers are more likely to experience these seizures. The risk may be reduced by being farther from the screen; using a smaller screen; playing in a well-lit room, and not playing when drowsy or fatigued. If you or any relatives have a history of seizures or epilepsy, consult a doctor before playing.

**CONTROLS**



**LIMITED WARRANTY**

The following warranty and support information applies only to customers in the United States and Canada, and only to original consumer purchasers of products covered by this warranty.

**LIMITED WARRANTY**

Square Enix, Inc. (“SEI”) warrants to the original purchaser of the enclosed product (the “Product”) that the media containing the Product (which includes any replacement media provided under this warranty) will be free from defects in materials and workmanship for a period of ninety (90) days from the date of purchase (the “Warranty Period”). SEI’s entire liability and your exclusive remedy under this limited warranty shall be, at SEI’s option, repair or replacement, without charge, of the whole or affected portion of any Product that proves to be defective in material or workmanship during the Warranty Period.

**EXCLUSIONS FROM WARRANTY**

This warranty applies only to defects in factory materials and factory workmanship. Any condition caused by abuse, unreasonable use, mistreatment, neglect, accident, improper operation, destruction or alteration, or repair or maintenance attempted by anyone other than SEI is not a defect covered by this warranty. Parts and materials subject to wear and tear in normal usage are not covered by this warranty.

**IMPLIED WARRANTIES AND INCIDENTAL AND CONSEQUENTIAL DAMAGES**

Under state or provincial law, you may be entitled to the benefit of certain implied warranties. ANY APPLICABLE IMPLIED WARRANTIES, INCLUDING WARRANTIES OF MERCHANTABILITY AND FITNESS FOR A PARTICULAR PURPOSE, WILL CONTINUE IN FORCE ONLY DURING THE WARRANTY PERIOD. Some states and provinces do not allow limitations on how long an implied warranty lasts, so the above limitation may not apply to you.

NEITHER SEI NOR YOUR RETAIL DEALER HAS ANY RESPONSIBILITY FOR ANY INCIDENTAL OR CONSEQUENTIAL DAMAGES RELATING TO YOUR USE OF THE PRODUCT, INCLUDING, WITHOUT LIMITATION, ANY DAMAGES FOR LOSS OF DATA OR LOSS OF PROFIT, OR FOR ANY INCIDENTAL EXPENSES, LOSS OF TIME, OR INCONVENIENCE.

As some states and provinces do not allow the exclusion or limitation of incidental or consequential damage, the foregoing limitation or exclusion may not apply to you.

**HOW TO OBTAIN WARRANTY SERVICE**

To obtain warranty service, please send the defective Product, together with a copy of your original sales receipt, your return address, name and telephone number, should contact be necessary, and a brief note describing the defect to SEI at the following address:

**Square Enix, Inc., Customer Warranty, 999 N. Sepulveda Blvd., 3rd Floor, El Segundo, CA, 90245**

THE DEFECTIVE PRODUCT MUST BE POSTMARKED WITHIN NINETY (90) DAYS FROM THE DATE OF PURCHASE. PROOF OF PURCHASE IN THE FORM OF A DATED RECEIPT MUST BE INCLUDED TO OBTAIN WARRANTY SERVICE.

The shipping costs for sending the defective Product to SEI is a sole responsibility of the Customer. SEI will not be liable for any damage or loss that occurs during shipping. To minimize loss during shipping, you may opt to use a tracking method when shipping.

**CUSTOMER SUPPORT**

If you have warranty questions, or require technical or customer support, please visit:

[www.square-enix.com/na/support](http://www.square-enix.com/na/support)

There you will be able to contact a representative live through our chat support system, view our hours of operation and review additional support details. You can also contact Customer Support at 310-846-0345. Please note that toll charges do apply when contacting us through phone support. For toll free service, please contact us through chat support or email.

**FOR INFORMATION AND SERVICES BY SQUARE ENIX, INC., GO TO  
[WWW.SQUARE-ENIX.COM/NA](http://WWW.SQUARE-ENIX.COM/NA)**

NOTICE: The Product, this manual, and all other accompanying documentation, written or electronic, are protected by United States copyright law, trademark law and international treaties. Unauthorized reproduction is subject to civil and criminal penalties. All rights reserved.



Tomb Raider © 2013 SQUARE ENIX LTD. SQUARE ENIX and the SQUARE ENIX logo are registered trademarks or trademarks of Square Enix Holdings Co., Ltd. LARA CROFT, TOMB RAIDER, CRYSTAL DYNAMICS, the CRYSTAL DYNAMICS logo, EIDOS, and the EIDOS-MONTREAL logo are registered trademarks or trademarks of Square Enix Ltd. All rights reserved. Uses FMOD Ex Sound System by Firelight Technologies. Uses Scaleform GfX © 2013 Scaleform Corporation. This product contains copyrighted material owned and/or distributed under authority by QUAZAL Technologies, Inc. © 1998-2013, QUAZAL Technologies, Inc. All other trademarks are the property of their respective owners. All rights reserved. Kinect, Xbox, Xbox 360, Xbox LIVE, and the Xbox logos are trademarks of the Microsoft group of companies and are used under license from Microsoft.

1470111

To view and/or download the complete game manual, go to:  
<http://na.square-enix.com/game-tombraider>